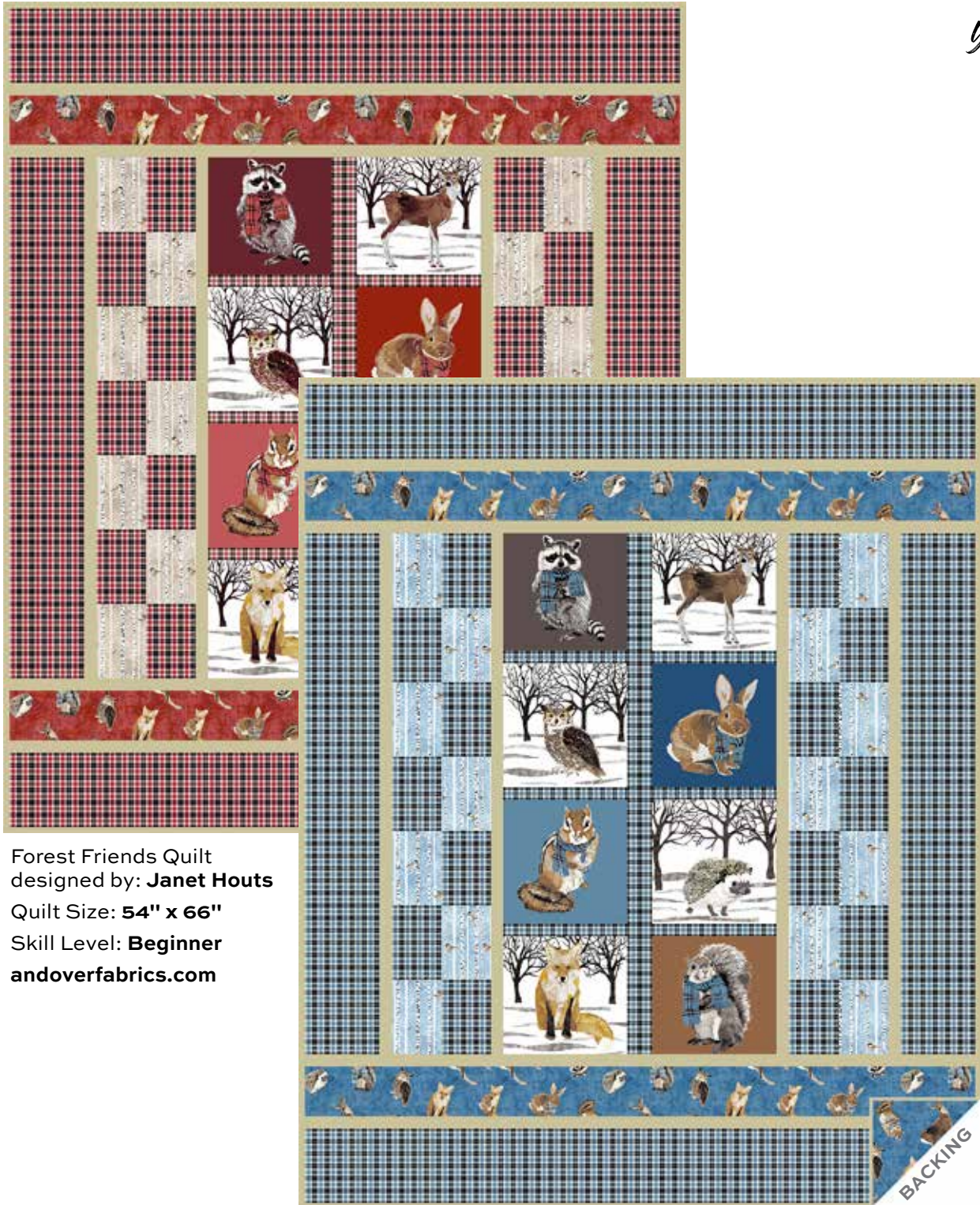


Woodland Winter

TWO CAN ART

a
100
years



Forest Friends Quilt
designed by: **Janet Houts**
Quilt Size: **54" x 66"**
Skill Level: **Beginner**
andoverfabrics.com

andover

•
•
• makower.uk
•

Free Pattern Download Available

1384 Broadway New York, NY 10018
Tel. (800) 223-5678 • andoverfabrics.com

9/15/20

Forest Friends Quilt

Introducing Andover Fabrics new collection: **WOODLAND WINTER** by Two Can Art

Quilt designed by Janet Houts



Quilt finishes 54" x 66"

These furry friends, some sporting neck scarves, will delight anyone who sees this charming quilt. It is the perfect size for a winter's night snuggle. The project is easy enough for someone just learning to quilt, or for anyone wanting to make a quick gift.

Fabric Requirements

		Yardage	Blue	Red
Fabric A	center	1 panel (2/3 yard)	9747 B	9747 R
*Fabric B	border	1 yard	9748 B	9748 R
Fabric C	set	1/2 yard	9749 B	9749 N
Fabric D	set, border	1 3/4 yards	9750 B	9750 R
**Fabric E	border	1/2 yard	CS-10-Oatmeal	CS-10-Oatmeal
**Binding		5/8 yard	CS-10-Oatmeal	CS-10-Oatmeal
*Backing		3 1/2 yards	9748 B	9748 R

Cutting Directions

Note: Read assembly directions before cutting patches. All measurements are cut sizes and include 1/4" seam allowances. Borders are cut the exact lengths required plus 1/4" seam allowances. WOF designates the width of fabric from selvedge to selvedge (approximately 43" wide).

Fabric A

Fussy-cut (1) panel 22 1/2" x 42 1/2", cut crosswise

Fabric B

Fussy-cut (4) strips 4 1/2" x WOF, pieced to make the following:
(2) borders 4 1/2" x 54 1/2"
(Read Steps 5-7 before cutting)

Fabric C

Cut (14) rectangles 4 1/2" x 6 1/2"

Fabric D

Cut (2) top/bottom borders 6 1/2" x 54 1/2", cut lengthwise
Cut (2) side borders 6 1/2" x 42 1/2", cut lengthwise
Cut (14) rectangles 4 1/2" x 6 1/2"

Fabric E

Cut (10) strips 1 1/2" x WOF, pieced to make the following:
(4) borders 1 1/2" x 54 1/2"
(4) borders 1 1/2" x 42 1/2"

Binding

Cut (7) strips 2 1/2" x WOF for binding

Backing

Cut (2) panels 38" x 62", pieced to fit quilt top
with overlap on all sides

Making the Quilt

1. Refer to the Quilt Diagram for all steps. Fussy-cut the animal panel evenly all around so that the vertical plaid strip is in the middle. Set panel aside.
2. Join Fabric C and Fabric D rectangles in pairs. Arrange 7 pairs, alternating the fabric placement as shown, to make the left side pieced border. Likewise, join 7 more pairs of rectangles to make the right border, noting that the fabric placement is in mirror image to the left border.
3. Sew Fabric E 42 1/2" border strips to sides of the pieced borders. Sew to opposite sides of the center panel.
4. Sew the Fabric D 42 1/2" borders to the sides.
5. The Fabric B animal print borders are cut crosswise (WOF), and are pieced to obtain the length needed. Here is a method to keep the print looking continuous, and to keep the seam less visible. If it is not important to you, skip to Step 8. Fussy-cut all 4 border strips from the same part of the print.

Forest Friends Quilt



6. Place one border strip above a second border strip, right sides facing up and animals oriented in the same way. Shift the top strip far to one side until the prints line up between the 2 strips near the (opposite) ends of both (Diagram 1). Lightly draw a vertical line across the 2 strips, avoiding animals as much as possible (shown in red on the diagram). Cut $\frac{1}{4}$ " away from the drawn lines as shown in black dashes on the diagram. (Note that the cutting lines are on opposite sides of the red lines. Pay attention so you don't cut the seam allowances incorrectly.) This leaves a seam allowance on the ends of both strips.



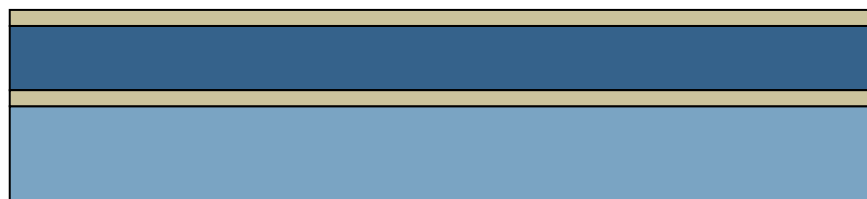
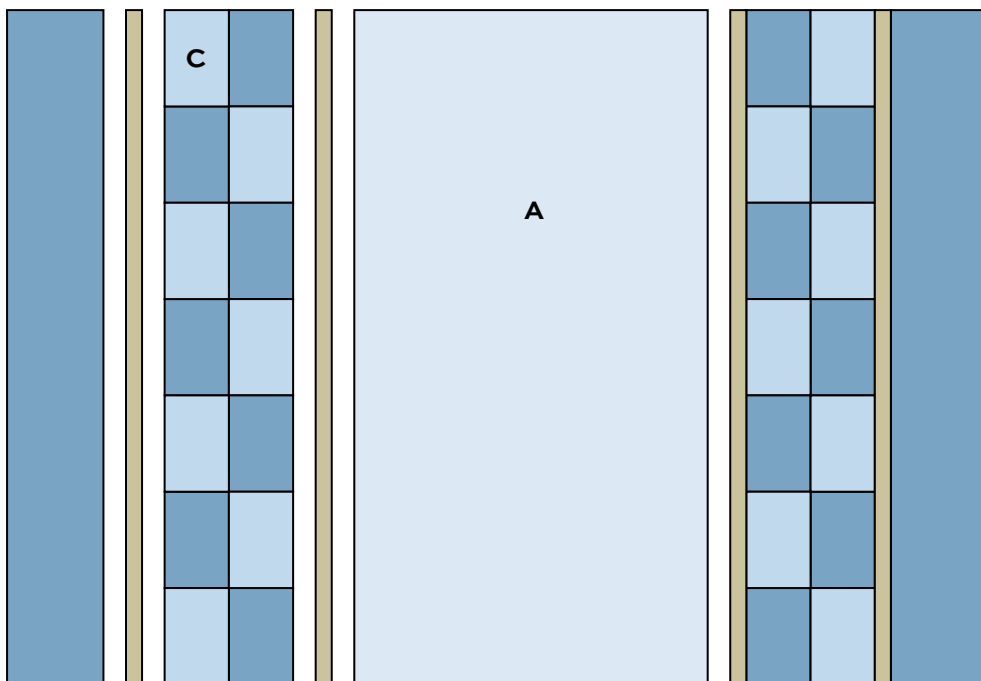
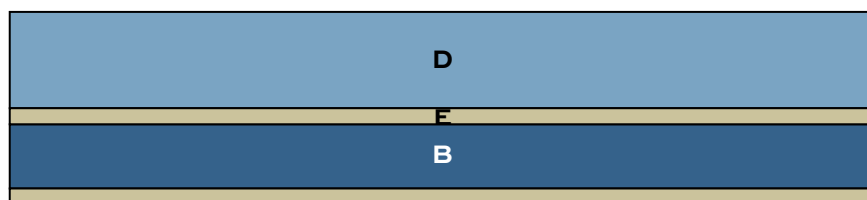
Diagram 1



Diagram 2

7. Position the top strip on the bottom strip, cut edges even and right sides together. Stitch along the drawn line. Press open the border (Diagram 2). Repeat the above steps with the 2 remaining animal print borders.

8. Make a pieced border by joining 2 Fabric E strips, a Fabric B pieced strip, and a Fabric D strip, noting the orientation of the animal print. Trim the animal border the same length as the other borders. Sew to the top of the quilt. Repeat for the bottom, again paying attention to the orientation of the animal print.



Quilt Diagram

Finishing the Quilt

9. Layer the quilt with batting and backing and baste. Quilt in the ditch around borders and block patches. Quilt around the printed motifs in the panel. Quilt the wide borders as desired. Bind to finish the quilt.

Woodland Winter

TWO CAN ART

Bolts needed to cut project kits. 15 yds = 1 bolt
 Panels reduced by 15%. All other fabrics shown are 25% of actual size.
 *Indicates fabrics used in featured quilt.

a
 100
years



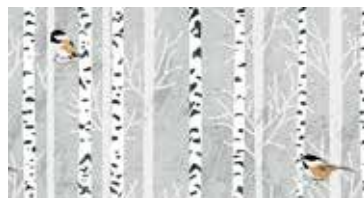
9747 B*



9747 R



9749 B*



9749 C



9749 N



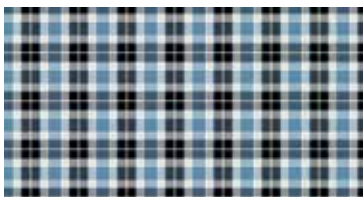
9748 B*



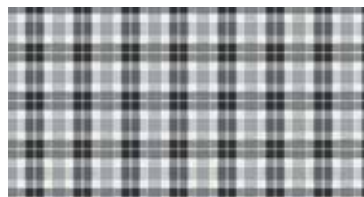
9748 C



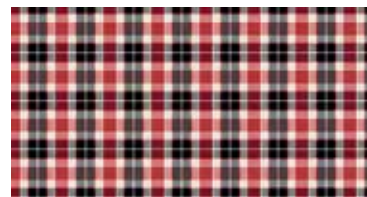
9748 R



9750 B*



9750 C



9750 R



CS-10-Oatmeal*

Blend with fabrics from
Century Solids
 by Andover Fabrics

andover : makower uk

Free Pattern Download Available

1384 Broadway New York, NY 10018
 Tel. (800) 223-5678 • andoverfabrics.com

9/15/20